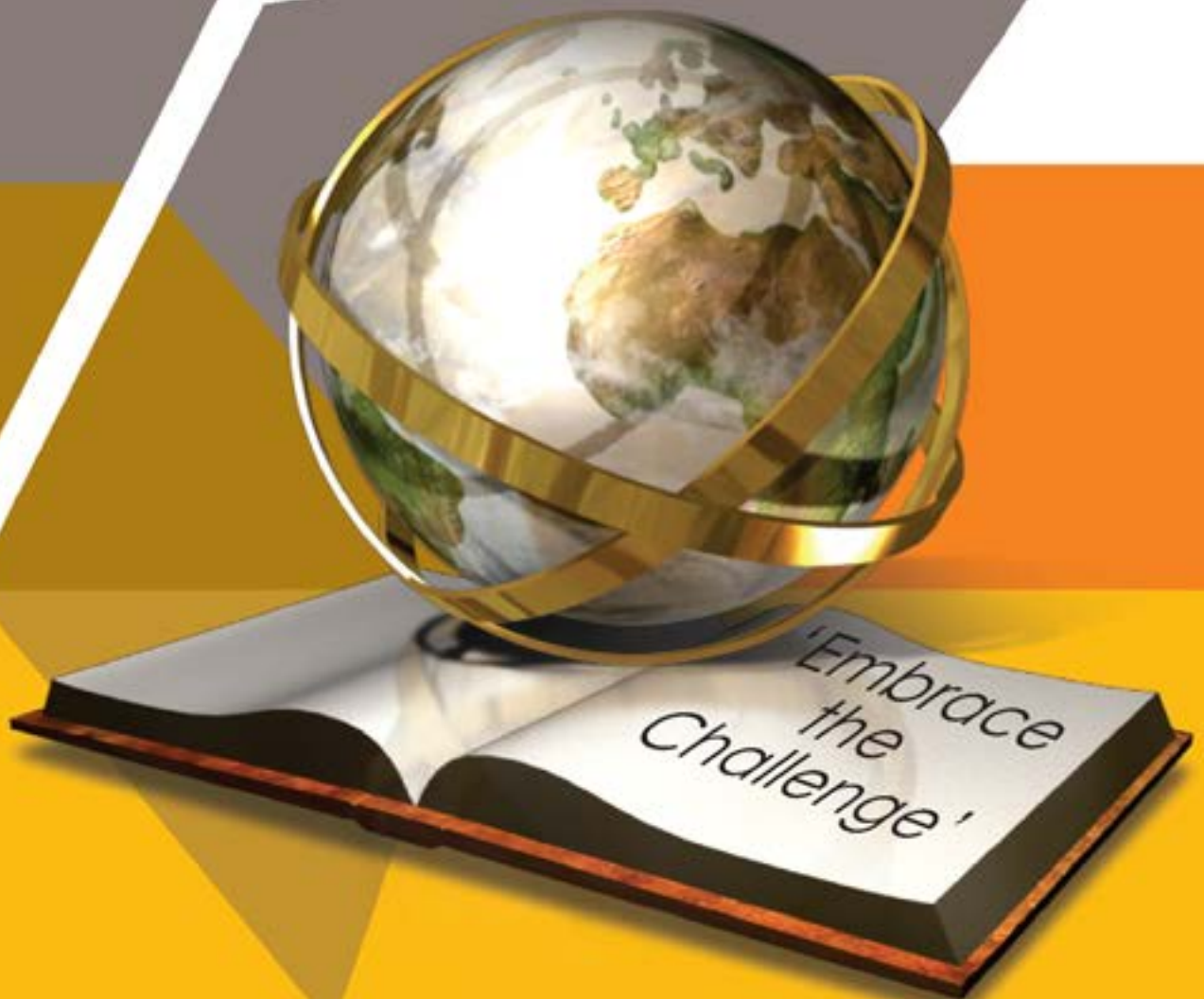




NOSSAL
High School

Instrumental Music Program 2023



Welcome to Music at Nossal High School

Music is a vibrant and thriving part of the Nossal High School community. Accommodating an extensive music program across all year levels, our students are supported by the music faculty in three main streams. These are private instrumental tuition, a rich and diverse ensemble program, and a comprehensive academic stream that prepares students for VCE and further studies.

We are exceedingly proud of the remarkably cultured music department we have successfully designed here at Nossal High School. Not only is it a place of creativity, high quality musical performance and academia, but it is an encouraging environment that is enjoyed by all our students, whether casual or regular visitors.

We encourage all students (and the wider community) to become involved in our program, whether through performance or composition, academic excellence, friendship or just for fun!

I look forward to seeing you at our next concert!

Clare Budd

Director of Music

clare.budd@nossalhs.vic.edu.au



Philosophy

Our music program is designed to make a significantly positive impact on all students who choose to participate in the program. We aim to expose students to the many benefits of a vibrant, energetic and practical music education experience. It is internationally recognised that participation in music education assists students to develop the ability to think critically, analytically and creatively, to problem solve and encourages students to be self-motivated and self-disciplined. The Music Program enables socialisation with students in other year levels, develops confidence in presenting and performing to their peers, to the whole school, and to the wider community. Students involved in the music program create quality music and make long term friendships.

The skills learned through participation and exposure to music programs and ensembles can also lead to further opportunities for social and musical interaction both at University and in the wider community.

Your child's level of success at learning an instrument depends very much upon how diligently they practice, and on how much support they are given at home. It ought to be remembered that not every musician can become a concert performer or a professional musician, but every musician can develop the expertise to be involved in music making as a leisure time pursuit.

Instrumental Tuition / Ensemble Program

Nossal High School is fortunate to be able to offer private music tuition to our students, on a variety of instruments, all conducted by a staff of excellent music educators. The following music lesson and assigned Ensemble are currently offered. Parents please note that enrolment in a music tuition class automatically enrolls the student in an instrument related ensemble.

| Woodwind | Brass | Strings | Other | Band |
|---------------------------|-----------------------------|--|----------------------------|--|
| Flute / Wind Symphony | French Horn / Wind Symphony | Violin / String Orchestra | Piano / Choir / Percussion | Voice (pop-jazz-contemporary) / Choir |
| Oboe / Wind Symphony | Trumpet / Wind Symphony | Viola / String Orchestra | Voice (classical) / Choir | Drum Kit / Percussion Ensemble |
| Clarinet / Wind Symphony | Trombone / Wind Symphony | Violoncello / String Orchestra | | Guitar / Guitar Ensemble |
| Saxophone / Wind Symphony | Euphonium / Wind Symphony | Double bass (classical) / String Orchestra | | Bass Guitar (contemporary) / Guitar Ensemble |
| Bassoon / Wind Symphony | Tuba / Wind Symphony | | | |

Lesson Schedule

Students' lessons are scheduled on a rotating timetable and are usually on the same day, but not at the same time. Parents have access to their student's music timetable via Compass and are encouraged to help students organise themselves, so they have their instrument at school on the correct day.

Nossal High School is an adult learning environment. It is the student's responsibility to know when their lesson is, have their instrument and music with them on the appropriate day, and to arrive at their lesson on time.

Lesson Equipment

Your child will require certain equipment throughout the year and is expected to come to all lessons prepared. Basic equipment may include:

- Musical Instrument
- Music books as requested by their teacher (Nossal actively discourages the illegal photocopying of music)
- Notebook to record practice instructions
- Instrument Specific items. For Example: Spare reeds, guitar leads, strings, rosin, valve oil etc.

Attendance

Students are required to attend their music lessons promptly.

Attendance at lessons and ensemble rehearsals is necessary for your child's progress to be satisfying and rewarding. It is the student's responsibility to attend all lessons at the scheduled time / day.

Absence from Lessons

It is the responsibility of the student to give AT LEAST 48 hours notice in the event of needing to change or cancel a scheduled lesson and/or ensemble rehearsal. Excursions, SACs and other school events will be published well in advance and the student should let their music teacher know immediately if they will be absent due to these circumstances.

- The School will not undertake to make up a lesson if the student forgets to attend or is absent without notification
- If a student has another school commitment which may clash with the lesson time the student should request a change of time a minimum of 7 days prior to the day of the lesson. Every attempt will be made to provide a make-up lesson under these circumstances. Continued absence with parental permission e.g. extended holidays, require a minimum of 30 days' notice in which case the teacher will re-schedule lessons where possible.

It is the responsibility of the parent to provide notification of student absence due to illness as soon as possible by emailing directly to the instrumental teacher (first name.last name@nossalhs.vic.edu.au) or the student can let their teacher know via a Teams message.

- In the event of absence due to illness, and the school has been advised before the day of the lesson, a make-up lesson will be scheduled by the music instructor as near as possible after the day the student returns to school.
- Continued absence with parental permission e.g. extended holidays, require a minimum of 30 days' notice in which case the teacher will re-schedule lessons where possible.

Musical Instrument Hire

Nossal offers enrolled music students the opportunity to hire instruments in Year 9. The following are currently available for hire: flute, clarinet, alto saxophone, tenor saxophone, trumpet, trombone, violin, viola, violoncello, double bass and various guitars/bass guitars. Larger instruments may be hired from school beyond Year 9 depending on availability.

Hire of instruments will be for the full school year and will allow students exclusive use of the instrument as well as the option to take the instrument home during the week, weekends and holiday periods. The school has a limited number of each instrument and priority will go to Year 9 students. If there are insufficient instruments available, the music department will help advise parents on the best local hire options.

- Instrument Hire Fee: \$400.00 (for the school year including all holidays – can be paid via payment plan)
- Security Deposit (Annual Bond): \$100.00 (refunded at the end of the school year/return of instrument)
- Families currently experiencing financial difficulties should discuss hire options with the Director of Music.

2023 Program Enrolment

Current Students

Students who are enrolled in music lessons in 2022, will need to re-enrol in the 2023 program. Parents will be contacted with details for re-enrolment in Term 4 2022.

New Students

Information regarding enrolment in the 2023 Music Program will be forwarded to all families in Term 4 2022.

Withdrawal from the Program

To ensure we can retain the services of our music staff, program planning commences in Term 4, 2022 and is based on confirmed and potential enrolments for 2023. It is expected that students will make a commitment for a full year's tuition. Minimum payment for music lessons is 6 months (2 terms).

If circumstances arise that a parent is considering withdrawing their child from the program during the school year the following requirements apply:

- **1 full term's notice (10 weeks) MUST BE GIVEN to withdraw from the music program**

| | |
|--|--|
| Notice to withdraw received at end of Term 1 | Payment required for Terms 1 & 2 |
| Notice to withdraw received at end of Term 2 | Payment required for Terms 1, 2 & 3 |
| Notice to withdraw received at end of Term 3 | Payment required for Terms 1, 2, 3 & 4 |

- Notification in writing from the parent must be forwarded to the Director of Music
- All attempts will be made to resolve any issues to ensure students are able to continue their music lessons until the end of the year

Fees & Charges

The Instrumental Music Program is a user pays co-curricular enrolment at Nossal High School.

Students are expected to attend all excursions related to their ensembles which may have additional individual charges. (e.g camps, festival performances, competitions and tours)

Please note: Year 12 student's ONLY will have 26 lessons throughout the year, instead of 32, to enable them to complete their music program prior to VCAA exam commencement.

| | 30 min lesson | 45 min lesson | 60 min lesson |
|---|---|-------------------------------------|-------------------------------------|
| Instrumental Lessons & Ensemble Participation | Years 9-11 \$1231 Year 12 \$1033 | Years 9-11 \$1759 Year 12 \$1462 | Years 9-11 \$2287 Year 12 \$1891 |
| Ensemble Participation Only | \$190 per year - All year levels Students who wish to participate in the ensemble program but who are not involved in the Instrumental Tuition program | | |

Ensemble Program Structure

The Nossal High School instrumental music focus is an ensemble-based program. All students are required to attend weekly scheduled rehearsals. These are directed by members of the instrumental music staff, who are all knowledgeable and enthusiastic educators. Ensemble rehearsals will commence in the second week of the school year, and re-commence in the first week of each term.

Each ensemble will receive multiple performance opportunities throughout the year, including at various school music concerts, soirées and galas. Ensembles may also perform at eisteddfods and music festivals.

The number of ensembles may vary due to enrolments and student interest.

Ensembles

Big Band:

This group is by audition only. Repertoire includes a diversity of big band material across Swing, Latin and Funk. The group performs yearly at the Victorian School Music Festival.

Wind Symphony:

The Wind Symphony (Concert Band) is the primary performing ensemble for woodwind, brass and percussion students at the school. The group performs yearly at the Victorian School Music Festival. The repertoire covers traditional, contemporary and popular classic concert band music.

String Orchestra:

The String Orchestra provides a platform for all students who play a string instrument. This ensemble embraces the uniquely beautiful sound of the string family and focuses on working together as a team to achieve a musical goal. They play regularly throughout the year at Nossal and other community events, enabling students to learn important performance skills with and without a conductor. The repertoire explores multiple styles ranging from classical to contemporary, each with a focus on a unified sound.

Choir:

The Choir has participated in Singfest many times and has competed in Eisteddfods. The repertoire is varied and open to all students in the Nossal community.

Guitar Ensemble:

The Guitar Orchestra is designed for beginner to advanced guitarists who perform a wide variety of compositions.

Percussion Ensemble:

The Percussion Ensemble has a repertoire that ranges from traditional African, Afro-Cuban and Brazilian, to more contemporary percussion pieces. Students learn a range of percussion instrument techniques including the conga, the guiro, xylophone, timpani, and the cajon to name but a few.

Jazz Combo:

The Jazz Combo was formed as an outlet for students who are interested in pursuing jazz and improvisation. This group is an auditioned ensemble, open to all students, instruments and levels.

Flute Ensemble:

The Flute Ensemble performs a wide variety of music written for 4 or more flutes and is open to all students.

String Quartet:

The string quartet is a select group which performs high quality classical and contemporary repertoire.



Concerts & Performance Opportunities

The Nossal Music Program presents several exceptional music concerts and VCE Soirées throughout the year when every ensemble performs. Attendance at these events is compulsory for music students. These events are held in our Meath Auditorium and cover a wide range of musical genres and individual talents.

Throughout the year many of our ensembles will perform at various competitions, special school functions and community events.

The skills and experience gained by performing in public and in front family and friends significantly enhances a student's self-esteem and supports growth and development of confidence.

Parental Involvement

Parental involvement is always encouraged and most appreciated. An involved and communicative relationship between the Music Department and parents is vital to a healthy, productive and successful music program. You can support your child (and their teacher) by being involved in their practice routine, providing performance opportunities at home and by attending school musical events. You do not need to know anything about music to encourage them in this way. Please assist your child's progress in this program by ensuring they take their instrument to school on their lesson and ensemble days.

Contact

We look forward to your participation in the Nossal High School Instrumental Music Program.

Questions regarding the program, its content, teaching and management, should be made to the Director of Music, Clare Budd at clare.budd@nossalhs.vic.edu.au or on 8762 4602.

Questions regarding the program payment should be made to Sharon Blyth at accounts@nossalhs.vic.edu.au or on 8762 4600.



